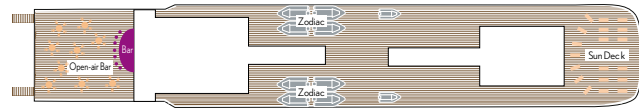
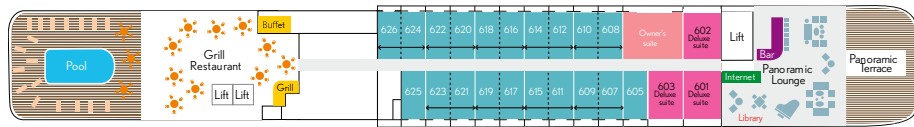


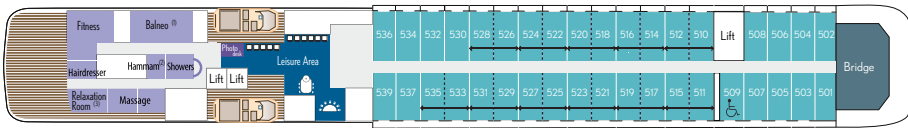
'L'Austral' Deck Plan



SUN DECK



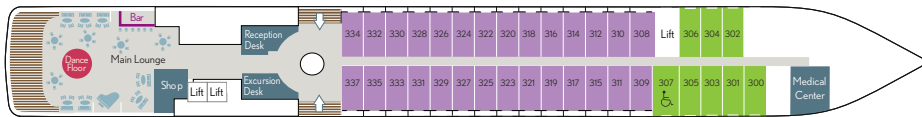
DECK 6



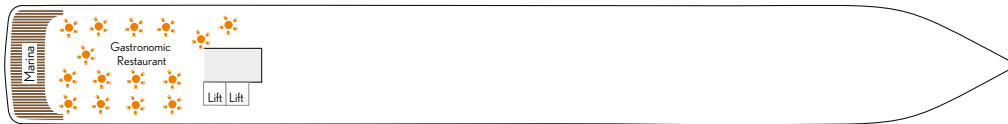
DECK 5



DECK 4



DECK 3



DECK 2

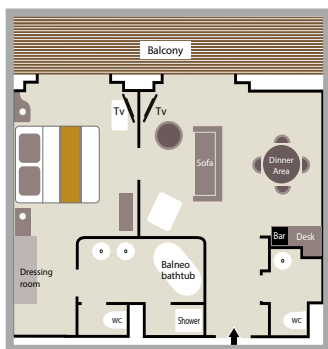
Cabin Categories

- Suite Deck 6
- Suite Deck 6
- Category 3 - Deck 5 Premier Balcony Stateroom
- Category 2 - Deck 4 Deluxe Balcony Stateroom
- Category 1 - Deck 3 Classic Balcony Stateroom

CABIN LAYOUT

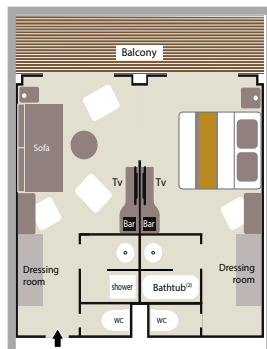
Suite Deck 6

Cabin: 484 sq. ft. (45 sq. m.)
Balcony: 97 sq. ft. (9 sq. m.)



Suites Deck 6

Cabin: 400 sq. ft. (37 sq. m.)
Balcony: 86 sq. ft. (8 sq. m.)



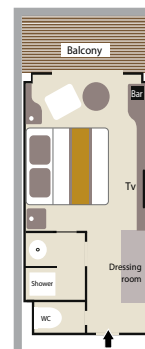
Suites Deck 6

Cabin: 290 sq. ft. (27 sq. m.)
Balcony: 54 sq. ft. (5 sq. m.)



Category 2 & 3 Staterooms Deck 4 - 5

Cabin: 200 sq. ft. (18.5 sq. m.)
Balcony: 43 sq. ft. (4 sq. m.)



Category 1 Staterooms Deck 3

Cabin: 200 sq. ft. (18.5 sq. m.)
Balcony: 43 sq. ft. (4 sq. m.)

