

BIKE ROUTES




KATAPINA
line

BIKE *Opatija* ROUTE



KRK - PUNAT - KRK

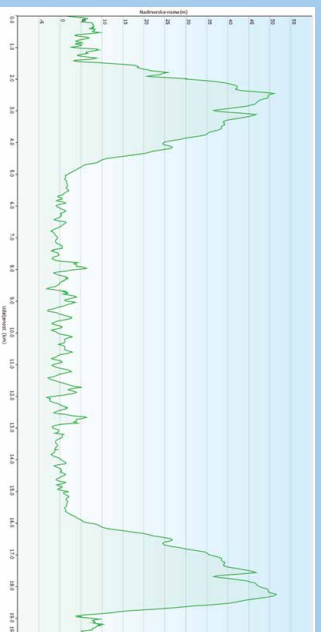
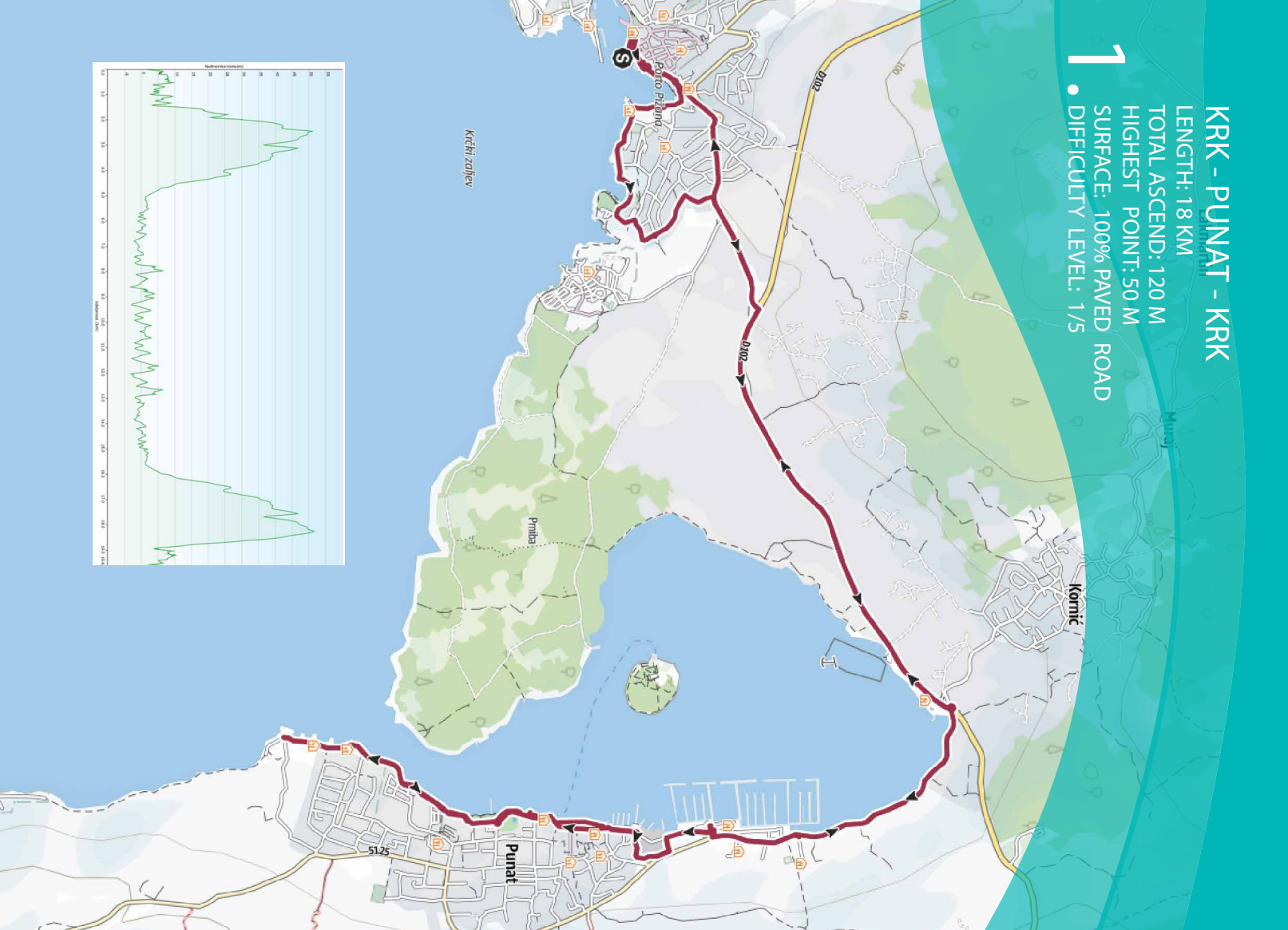
LENGTH: 18 KM

TOTAL ASCEND: 120 M

HIGHEST POINT: 50 M

SURFACE: 100% PAVED ROAD

1 • DIFFICULTY LEVEL: 1/5



KRK - DOBRINJ - VRBNIK - BAŠKA

LENGTH: 48 KM

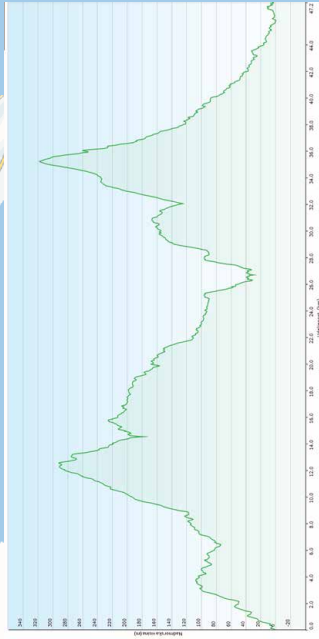
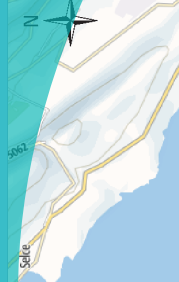
TOTAL ASCEND: 660 M

HIGHEST POINT: 315 M

SURFACE: 90% PAVED ROAD, 10% MACADAM

DIFFICULTY LEVEL: 4/5

2.



LOPAR - RAB

LENGTH: 22 KM

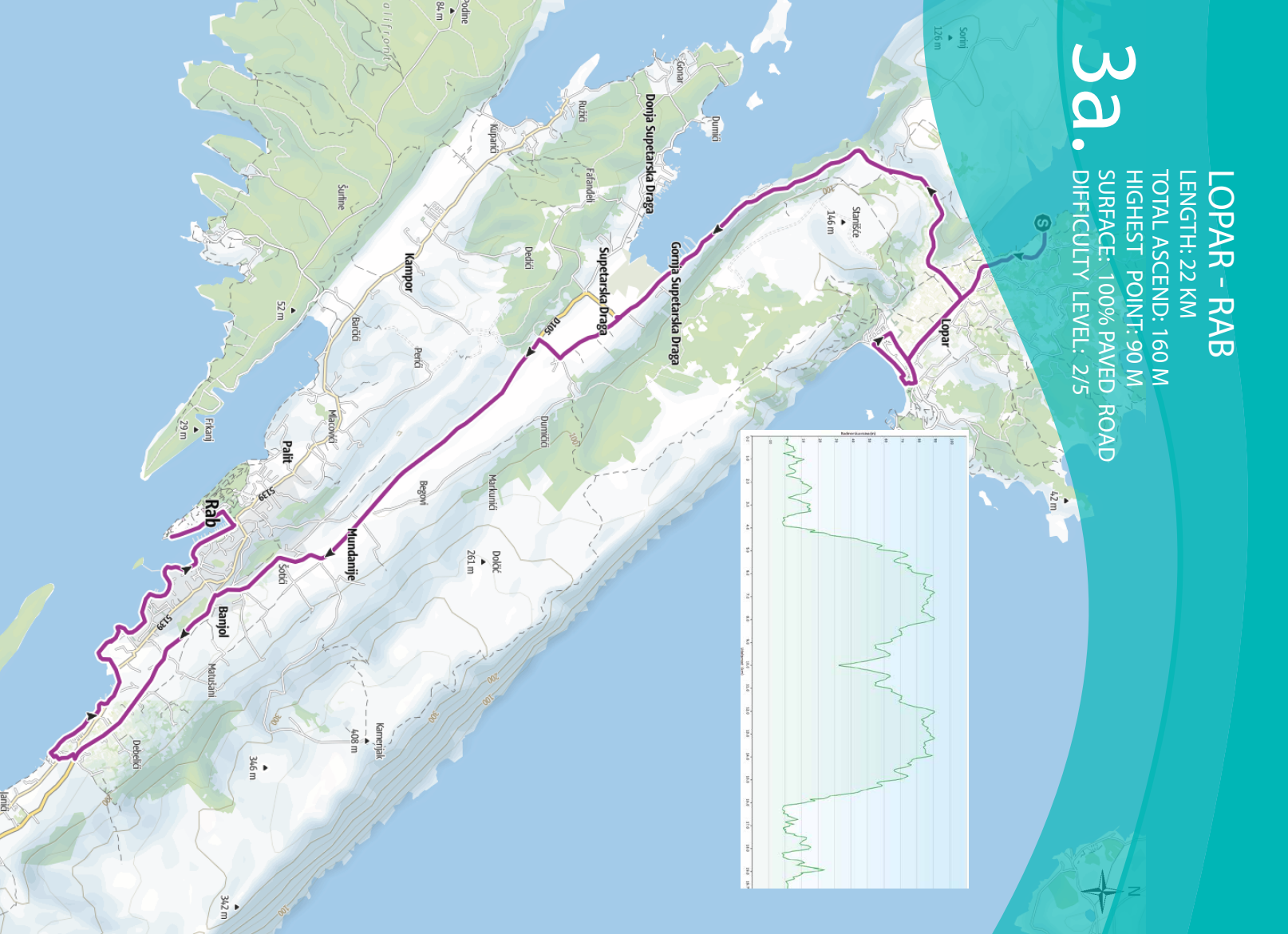
TOTAL ASCEND: 160 M

HIGHEST POINT: 90 M

SURFACE: 100% PAVED ROAD

DIFFICULTY LEVEL: 2/5

3a.



RAB - SV. MARA - RAB

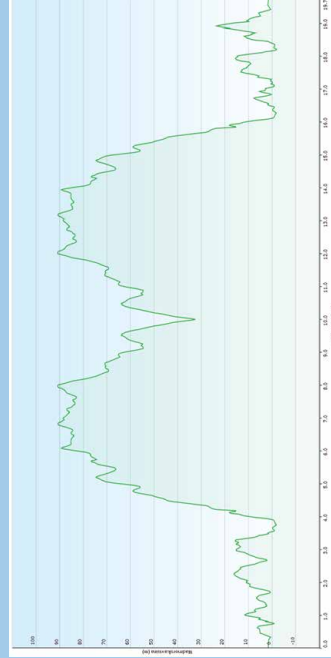
LENGTH: 21 KM

TOTAL ASCEND: 150 M

HIGHEST POINT: 90 M

SURFACE: 95% PAVED ROAD, 5% MACADAM
DIFFICULTY LEVEL: 2/5

3b.



TOVARNELE - NOVALJA - MANDRE

LENGTH: 35 KM

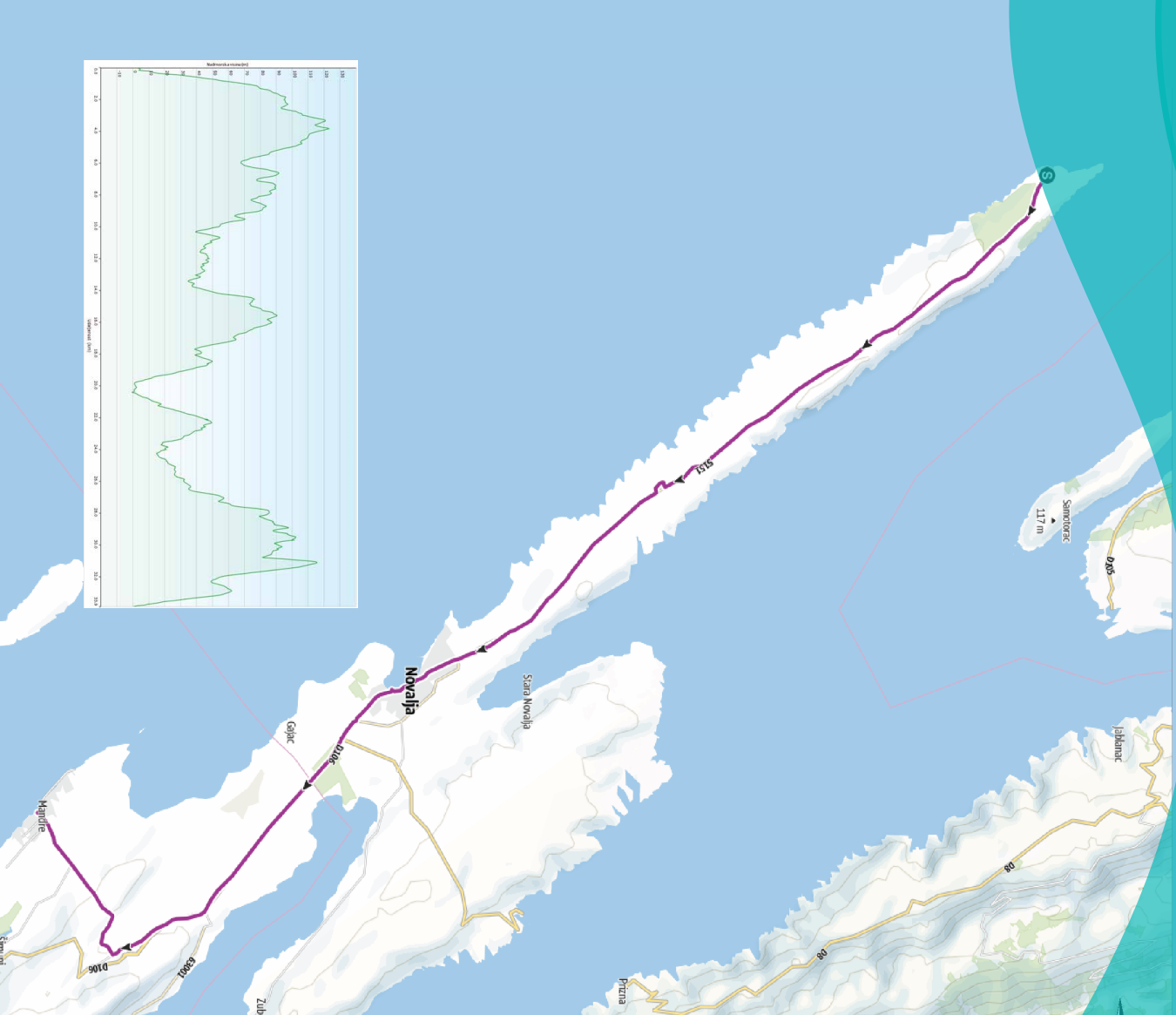
TOTAL ASCEND: 340 M

HIGHEST POINT: 120 M

SURFACE: 100% PAVED ROAD

DIFFICULTY LEVEL: 2/5

4.



M.O. LOŠINJ - OSOR - MARTINIŠČICA

LENGTH: 46 KM

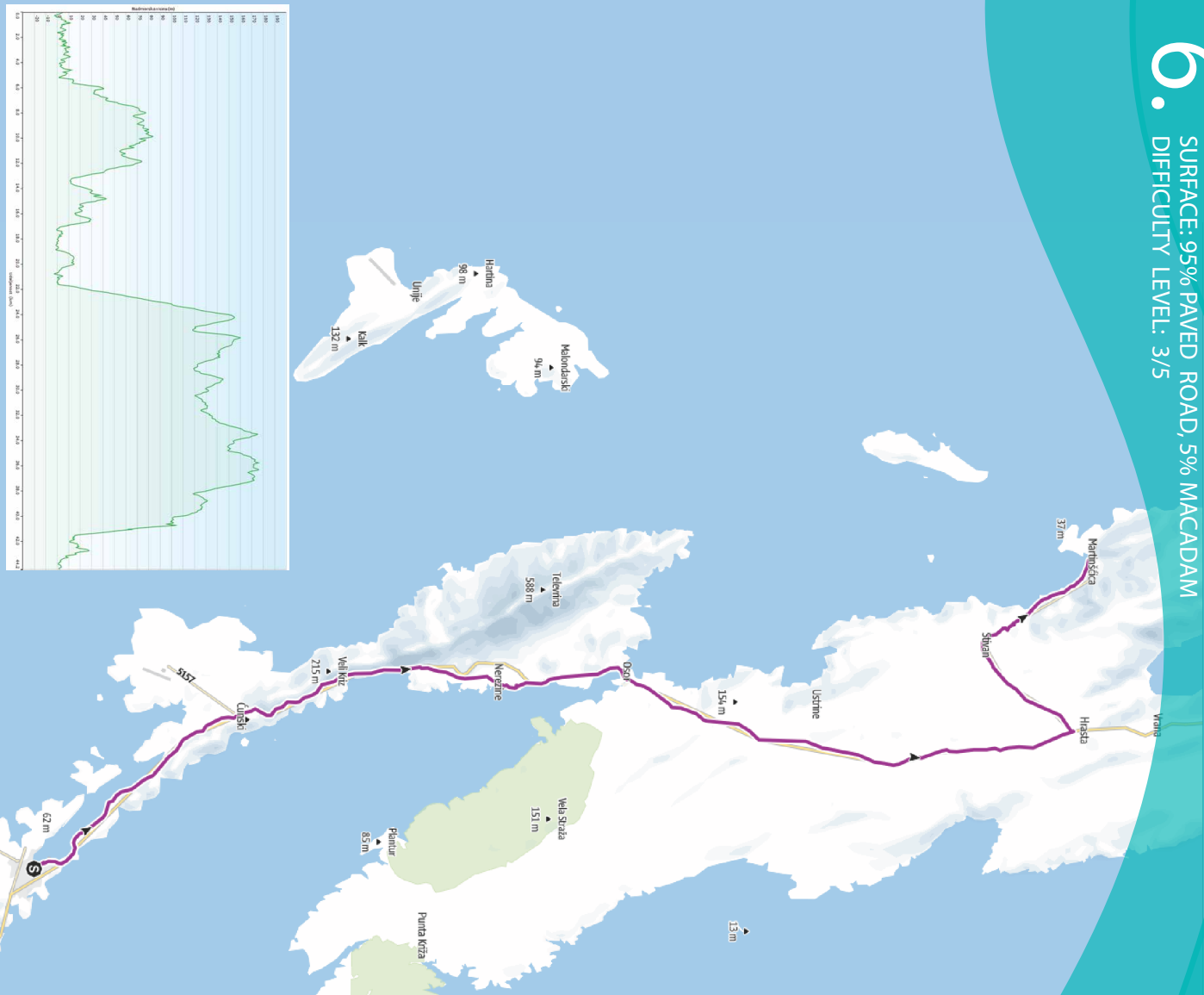
TOTAL ASCEND: 500 M

HIGHEST POINT: 190 M

SURFACE: 95% PAVED ROAD, 5% MACADAM

DIFFICULTY LEVEL: 3/5

6.



MOŠČENIČKA DRAGA - BRSEČ - LOVRAN

LENGTH: 27 KM 42.7 m Difficulty

TOTAL ASCEND: 450 M

HIGHEST POINT: 325 M

SURFACE: 100% PAVED ROAD

DIFFICULTY LEVEL: 3/5

7

•

Lowran

Pliš 1385 m

Čigjak 401 m

Suh Vrh 1333 m

Lovranski Draga

Tulševka

Liganj

Mecina

Kač

Mevoče

Sv. Anton

Opče

Belkaj

Spilova

Mojšence

Mački

Svetajlena

Dol

Martina

375 m

800 m

826 m

566 m

566 m

566 m

566 m

566 m

566 m

566 m

566 m

566 m

566 m

06 m

325 m

325 m

325 m

325 m

325 m

325 m

325 m

325 m

325 m

325 m

325 m

325 m

325 m

325 m



BIKE *Split South* ROUTE



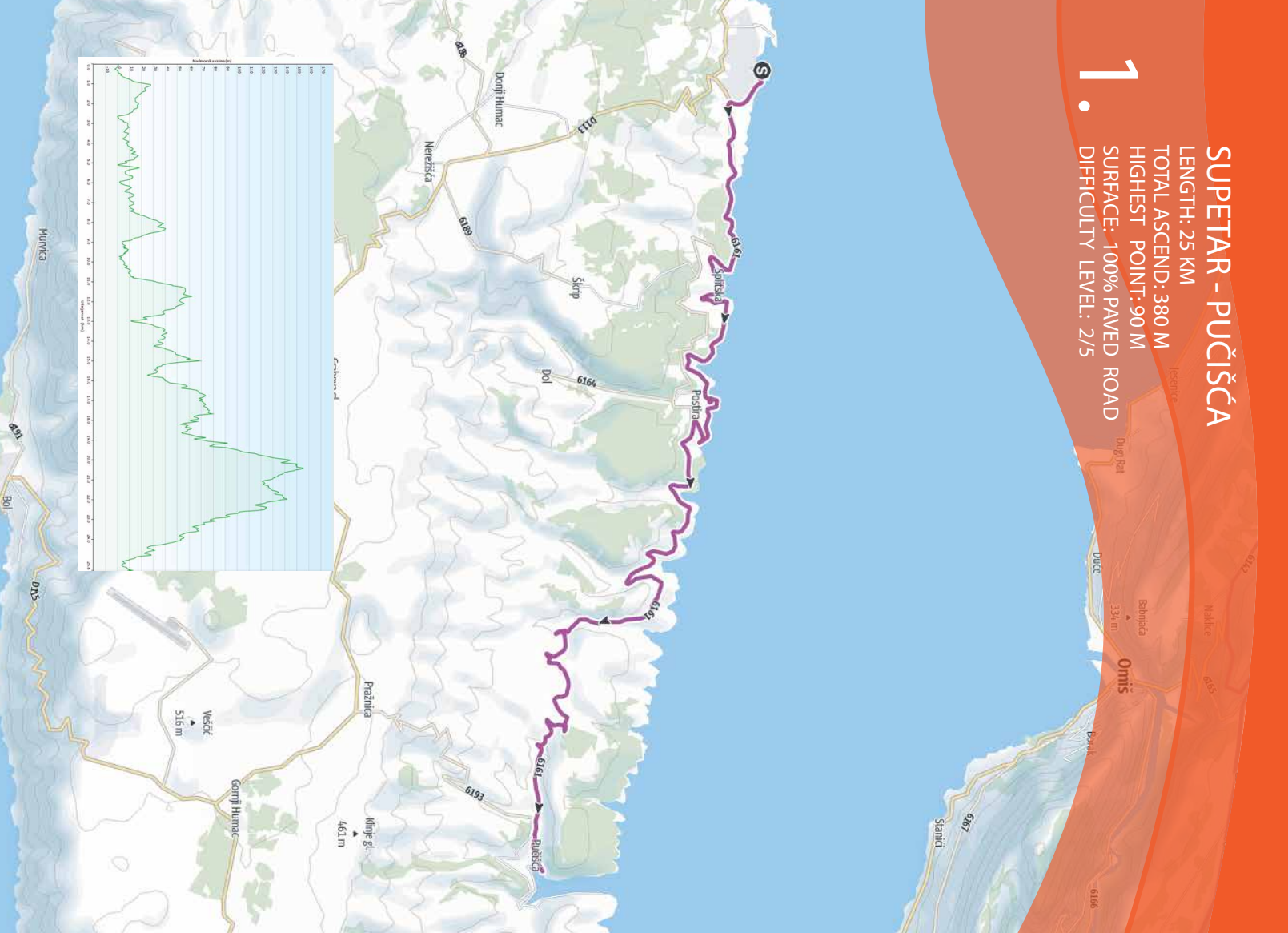


Vela Luka

SUPETAR - PUČIŠČA

LENGTH: 25 KM
TOTAL ASCEND: 380 M
HIGHEST POINT: 90 M
SURFACE: 100% PAVED ROAD
DIFFICULTY LEVEL: 2/5

1.



POKRIVENIK - SUĆURAJ

LENGTH: 32 KM

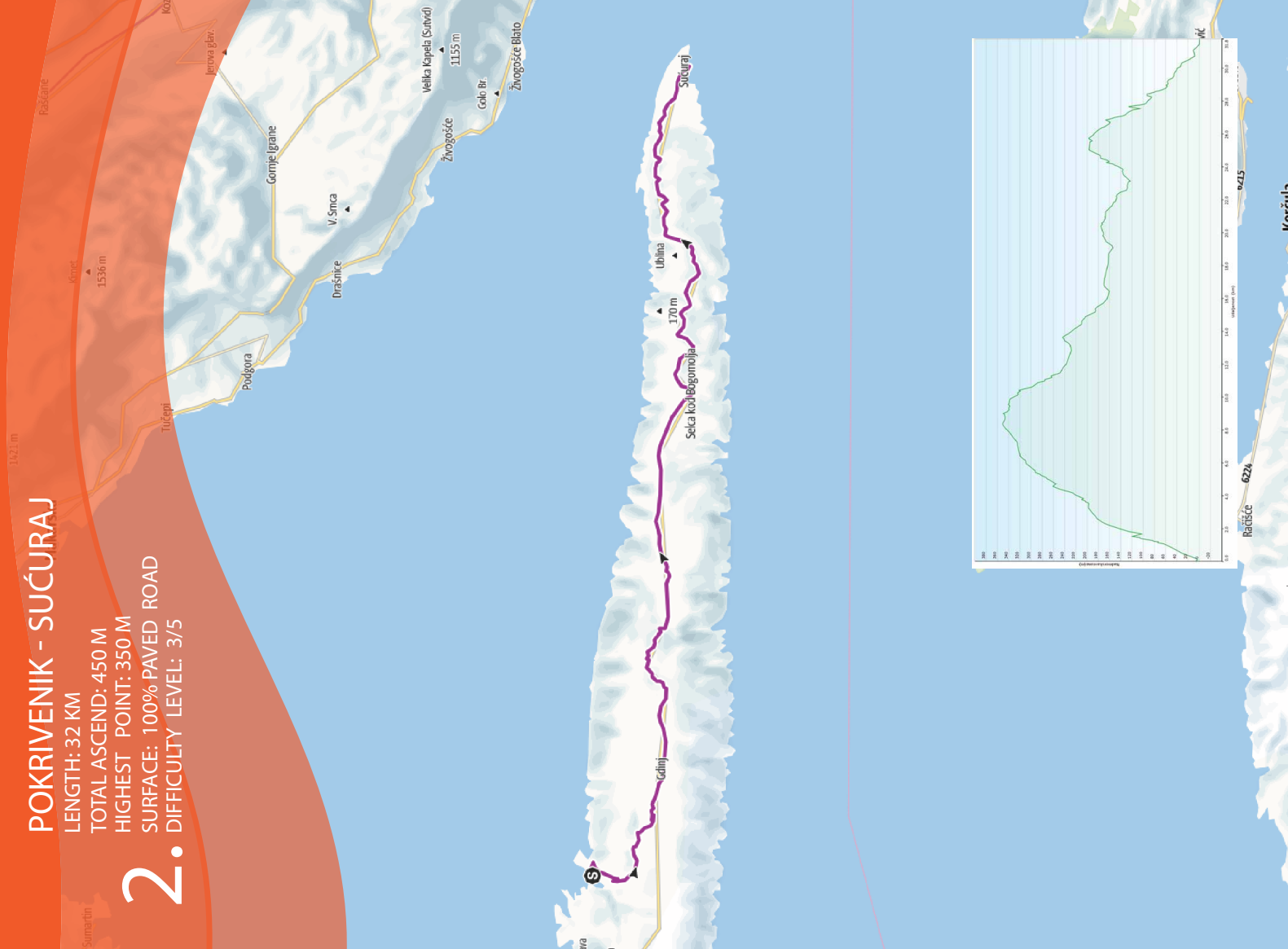
TOTAL ASCEND: 450 M

HIGHEST POINT: 350 M

SURFACE: 100% PAVED ROAD

DIFFICULTY LEVEL: 3/5

2.



KUČIŠTA - TRSTENIK

LENGTH: 30 KM

TOTAL ASCEND: 800 M / 580M

HIGHEST POINT: 540 M

SURFACE: 100% PAVED ROAD

3. DIFFICULTY LEVEL: 4/5



NP MLJET

LENGTH: 18 KM

TOTAL ASCEND: 120 M

HIGHEST POINT: 45 M

SURFACE: 80% PAVED ROAD, 20% MACADAM

DIFFICULTY LEVEL: 1/5

4.



KORČULA - PUPNAT - SMOKVICA

- PRIŽBA - BLATO - VELA LUKA

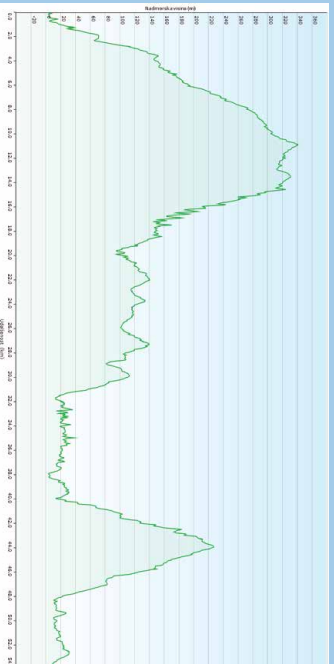
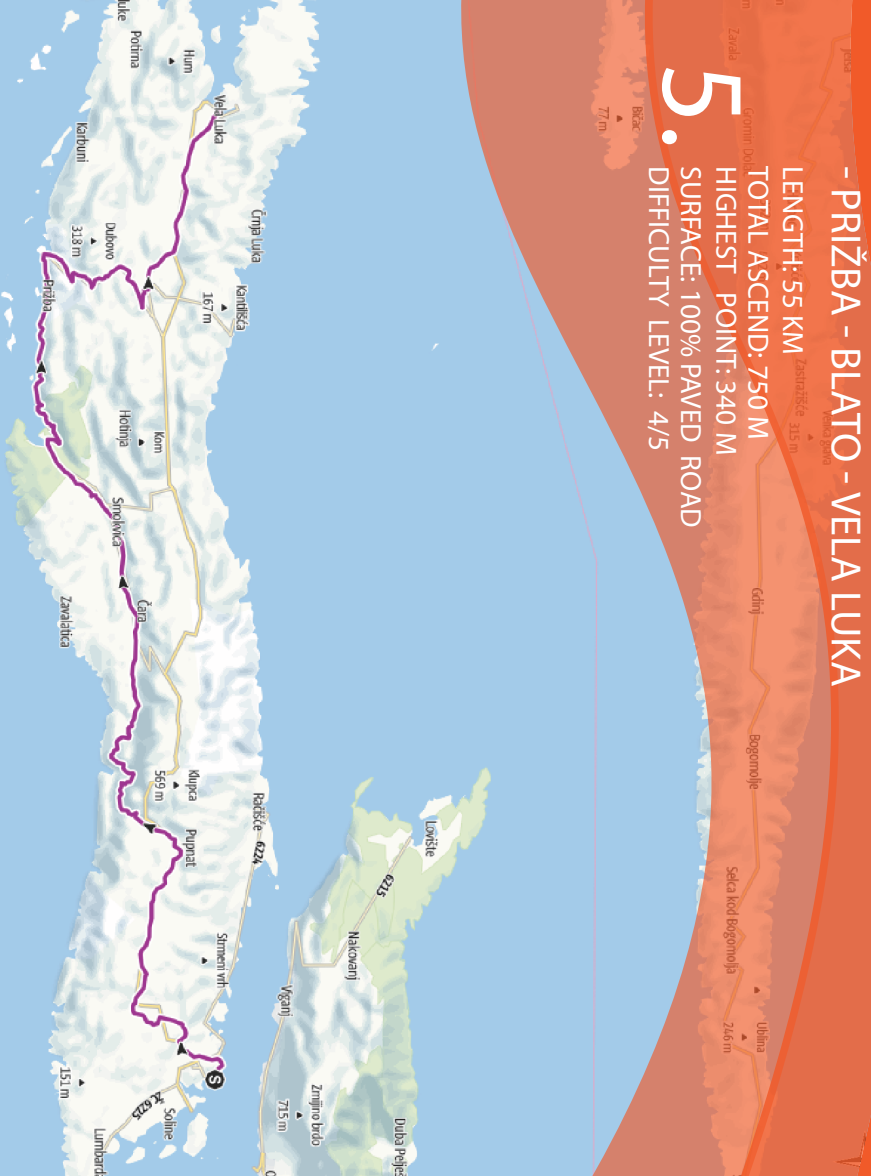
LENGTH: 55 KM

TOTAL ASCEND: 750 M

HIGHEST POINT: 340 M

SURFACE: 100% PAVED ROAD

DIFFICULTY LEVEL: 4/5



HVAR - STARI GRAD

LENGTH: 23 KM

TOTAL ASCEND: 450 M

HIGHEST POINT: 410 M

SURFACE: 100% PAVED ROAD

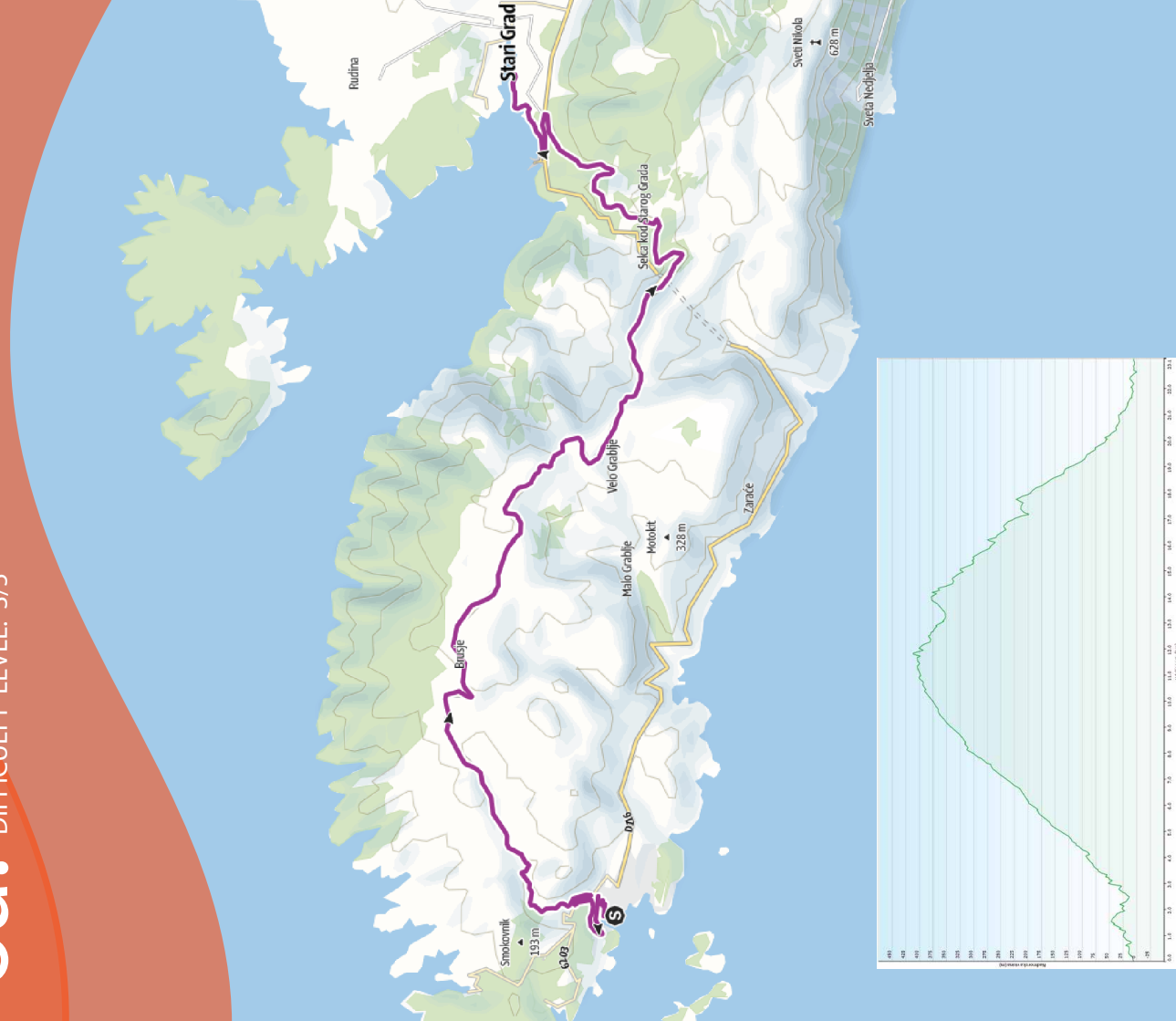
DIFFICULTY LEVEL: 3/5

6a.

Difficulty

16m

Map



STARI GRAD - JELSA - VRBOSKA - ST. GRAD

LENGTH: 22 KM

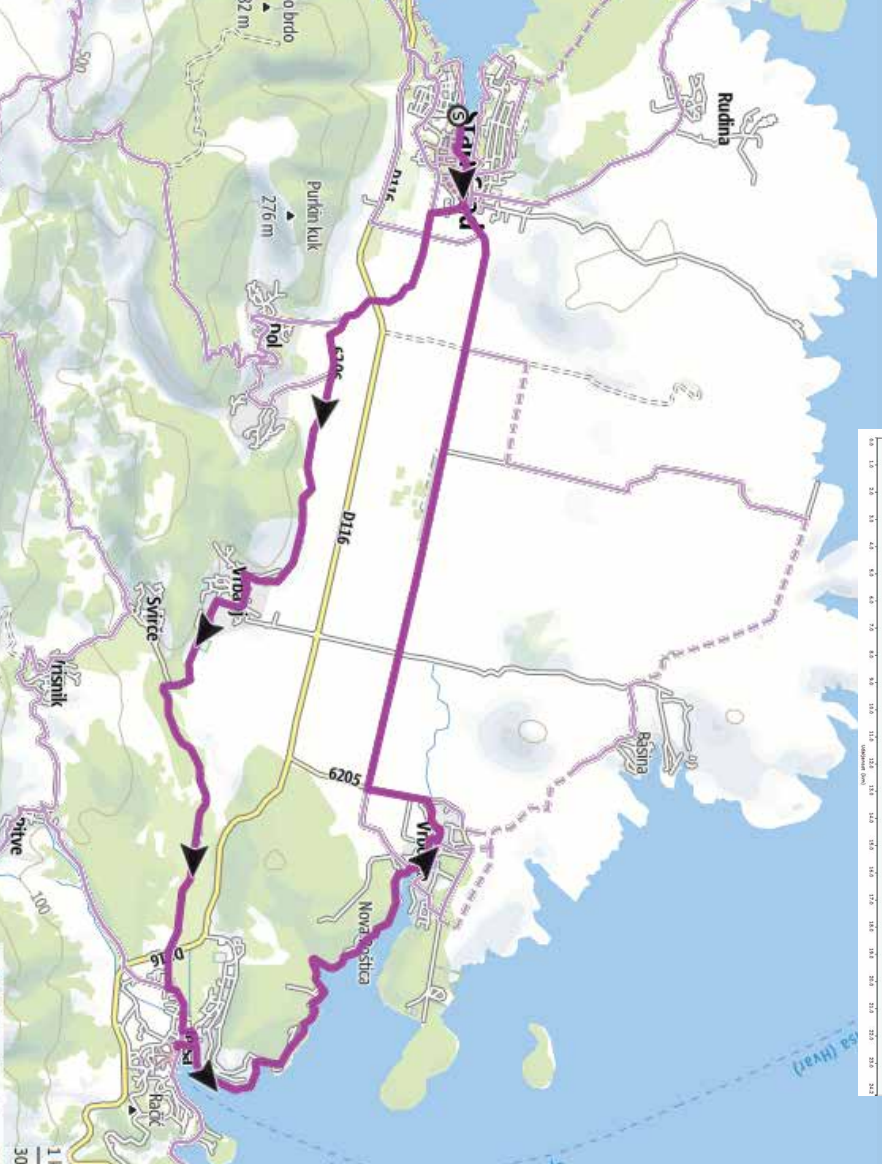
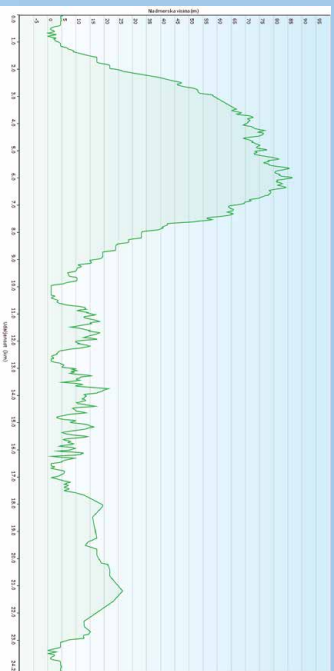
TOTAL ASCEND: 110 M

HIGHEST POINT: 85 M

SURFACE: 85% PAVED ROAD, 15% MACADAM

DIFFICULTY LEVEL: 1/5

6b.



STOMORSKA - MASLINICA

LENGTH: 36 KM

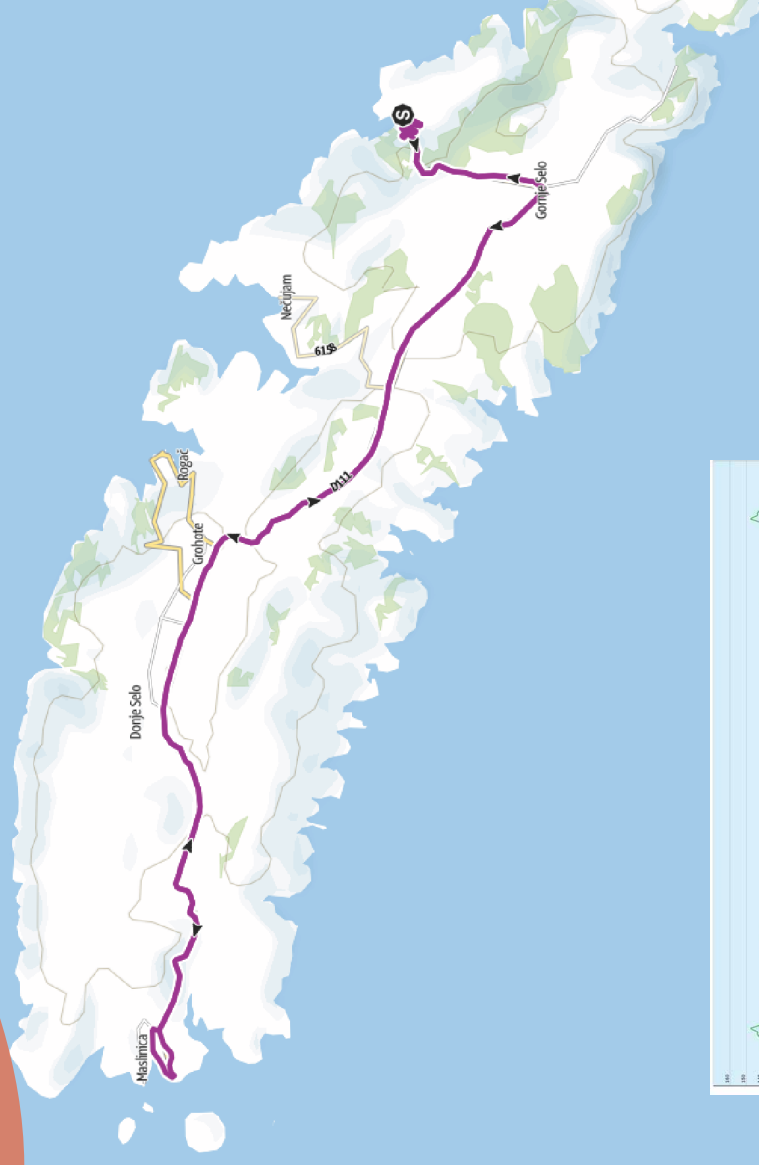
TOTAL ASCEND: 450 M

HIGHEST POINT: 135 M

SURFACE: 100% PAVED ROAD

DIFFICULTY LEVEL: 2/5

7.



BIKE *Split North* ROUTE





Kornati

ROGOZNICA - PRIMOŠTEN

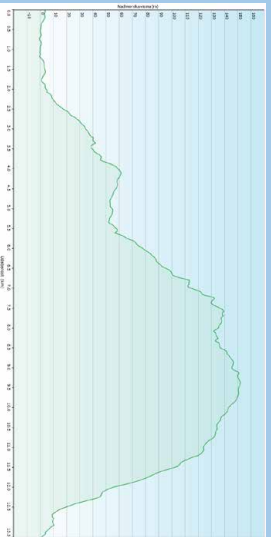
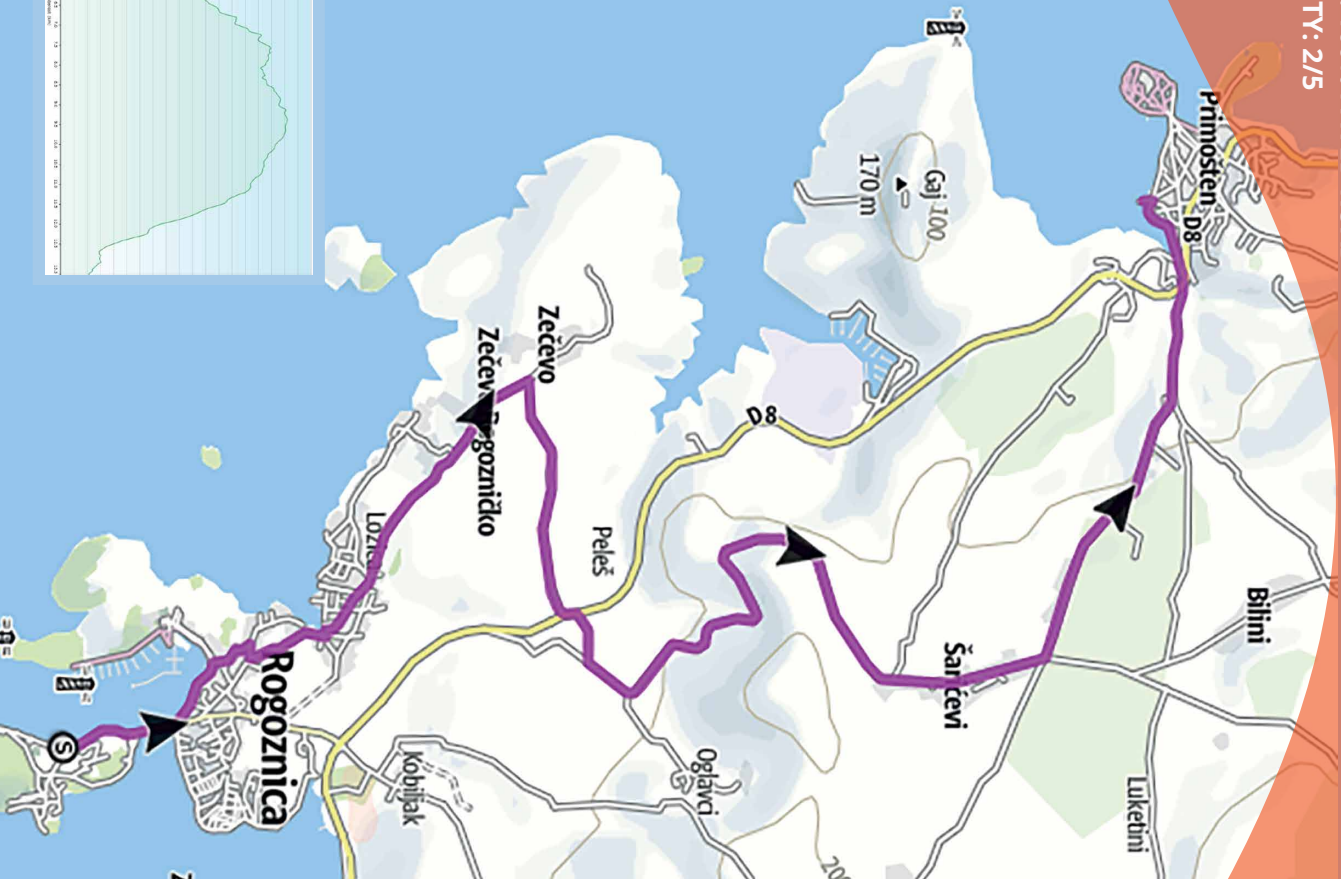
LENGTH: 14 KM

TOTAL ASCEND: 180M

HIGHEST POINT: 150M

SURFACE: 100% PAVED ROAD

DIFFICULTY: 2/5



VODICE - MURTER

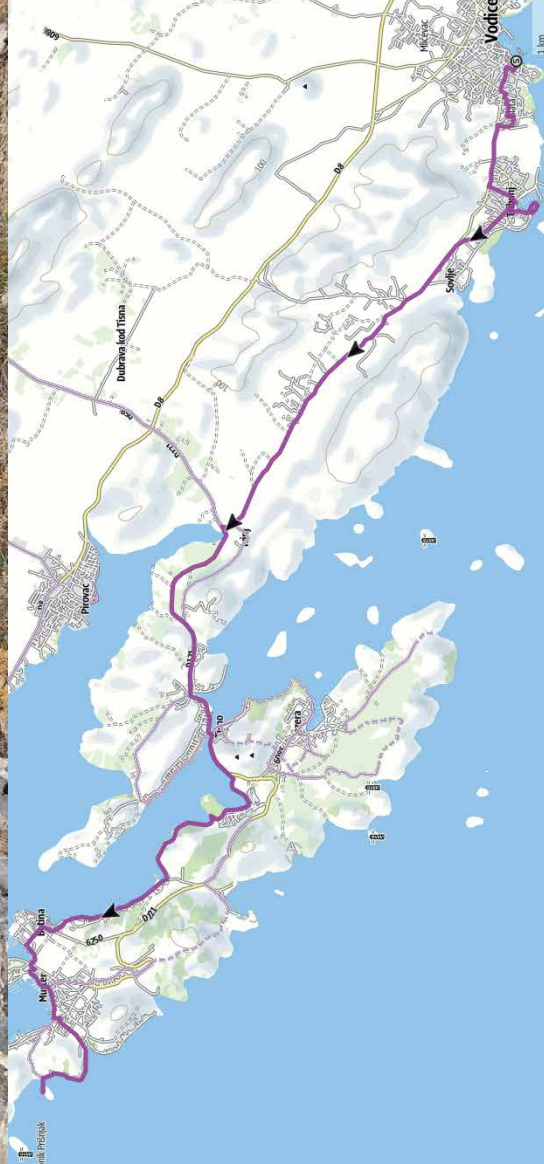
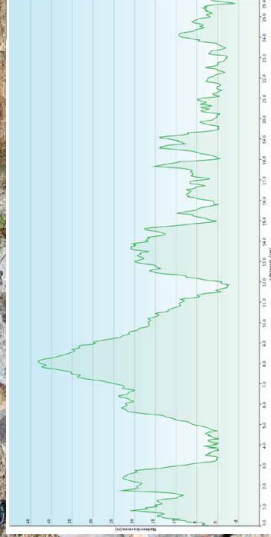
LENGTH: 26 KM

TOTAL ASCEND: 100 M

HIGHEST POINT: 45 M

SURFACE: 100% PAVED ROAD

2a.



PP TELAŠČICA

LENGTH: 20 KM

TOTAL ASCEND: 250 M

HIGHEST POINT: 90 M

SURFACE: 100% PAVED ROAD

DIFFICULTY: 3/5

2b.



SALI - BRBINJ

LENGTH: 28 KM

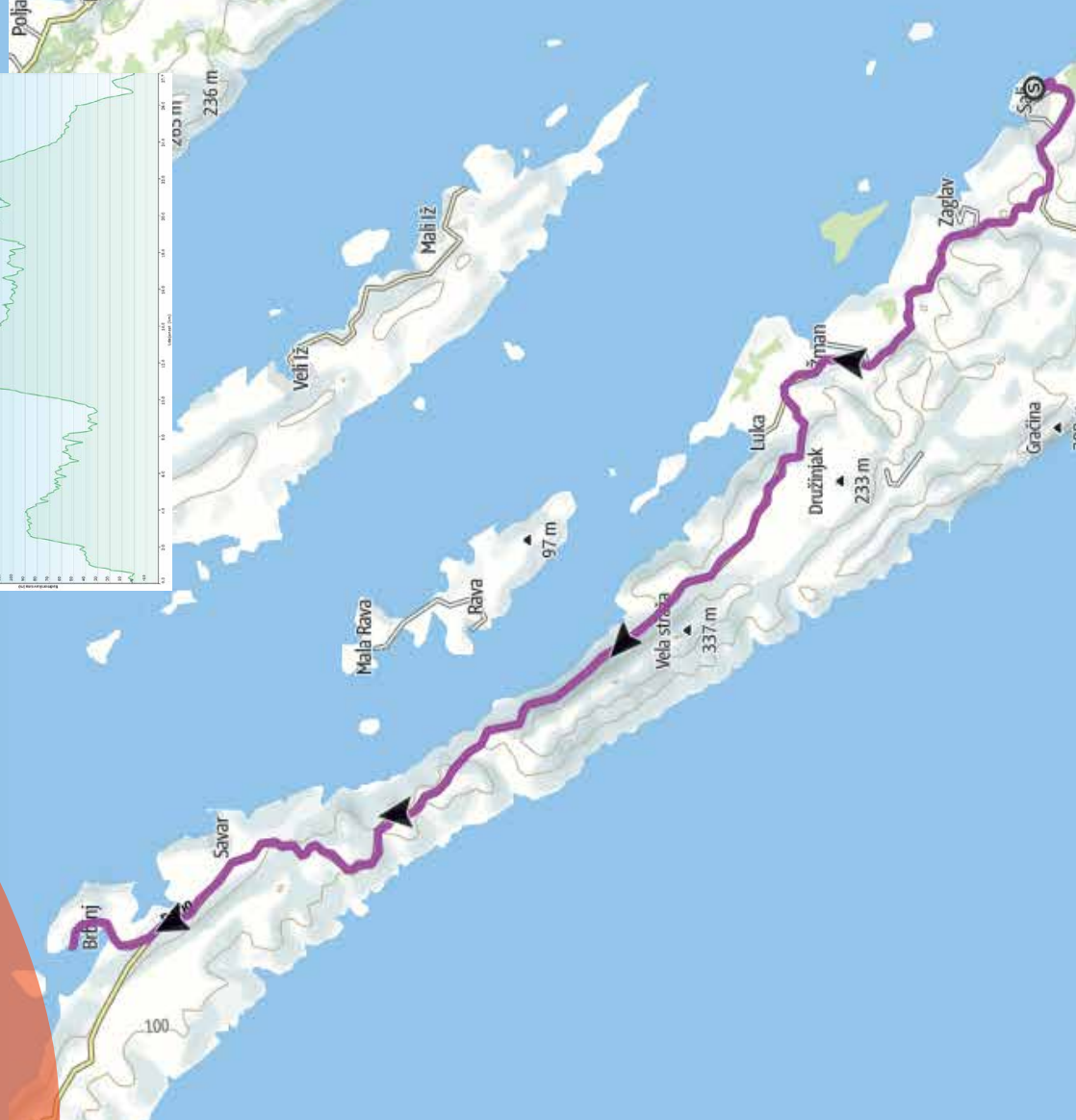
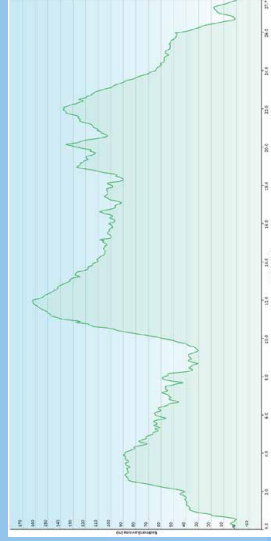
TOTAL ASCEND: 320 M

HIGHEST POINT: 160 M

SURFACE: 100% PAVED ROAD

DIFFICULTY: 3/5

3.



PREKO - TKONJ

LENGTH: 31 KM

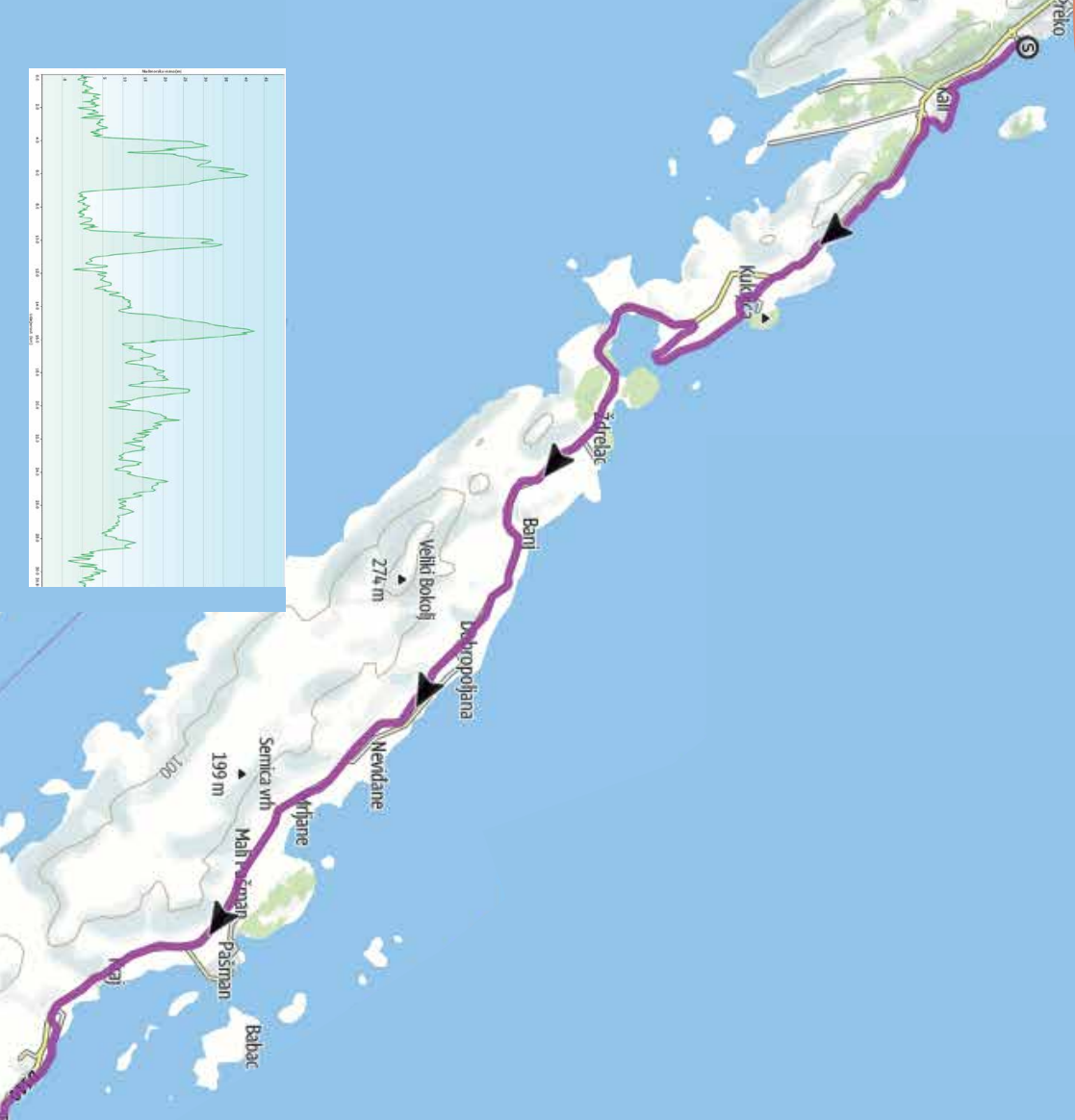
TOTAL ASCEND: 1400 M

HIGHEST POINT: 45 M

SURFACE: 100% PAVED ROAD

DIFFICULTY: 1/5

4.



SKRADIN - ŠIBENIK

LENGTH: 25 KM

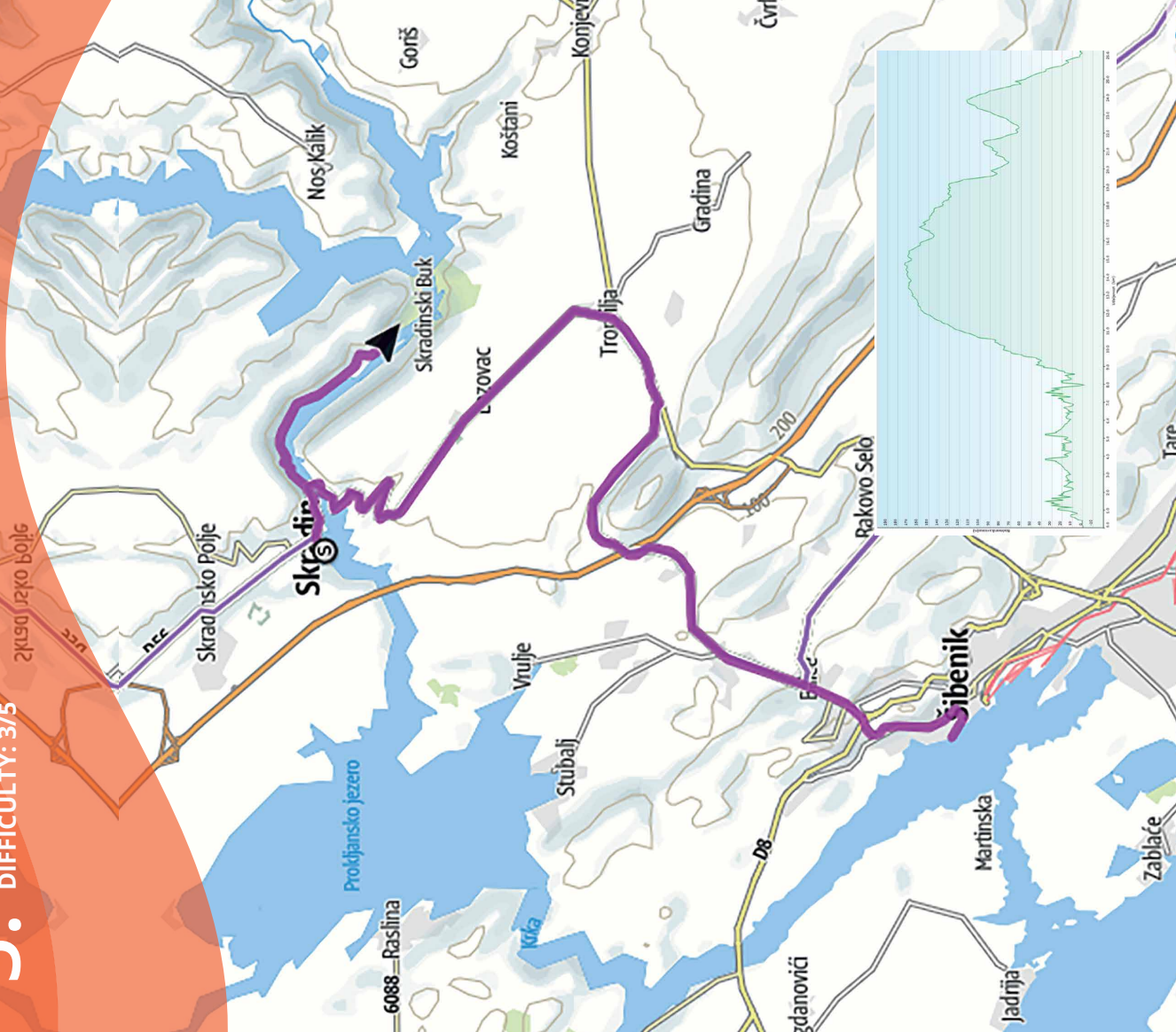
TOTAL ASCEND: 270 M

HIGHEST POINT: 175 M

SURFACE: 70% PAVED ROAD, 30% MACADAM ROAD

DIFFICULTY: 3/5

5.



ŠIBENIK BIKE TOUR

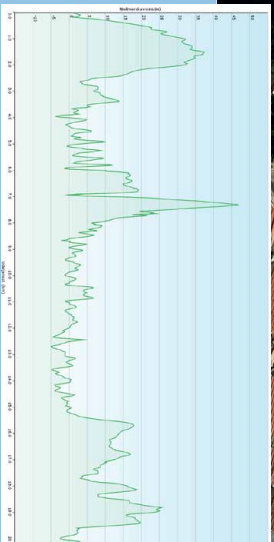
LENGTH: 20 KM

TOTAL ASCEND: 120 M

HIGHEST POINT: 50 M

SURFACE: 85% PAVED ROAD

DIFFICULTY: 1/5



ČIOVO BIKE TOUR

LENGTH: 26 KM

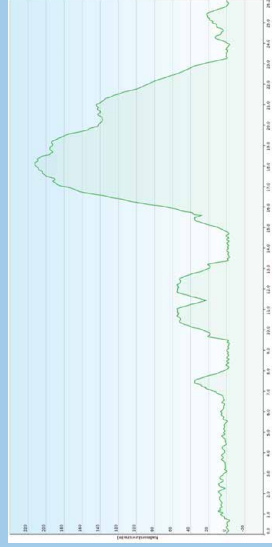
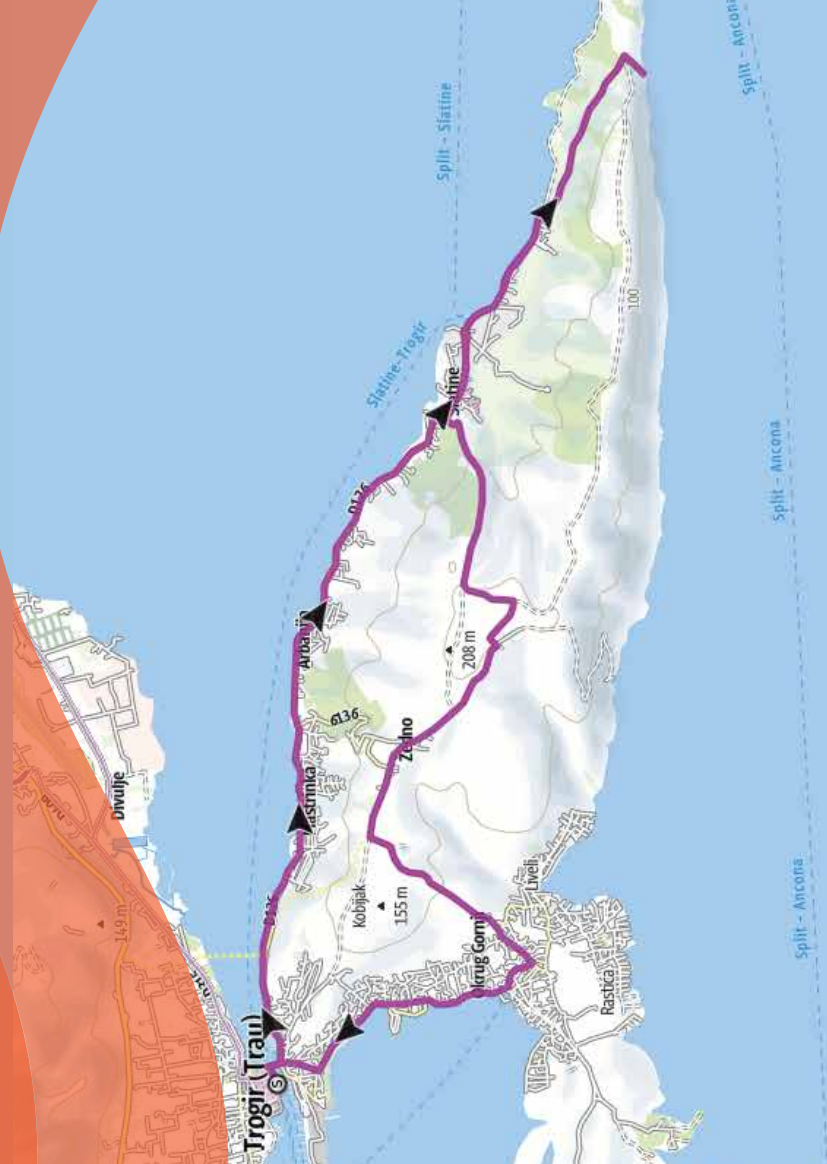
TOTAL ASCEND: 350 M

HIGHEST POINT: 210 M

SURFACE: 100% PAVED ROAD

DIFFICULTY: 3/5

7.



MEDJUGORJE *Pilgrimage*

Experience the beauty and peace of this simple village. Share faith with thousands of pilgrims from all over the world.



CROATIAN *Rhapsody*

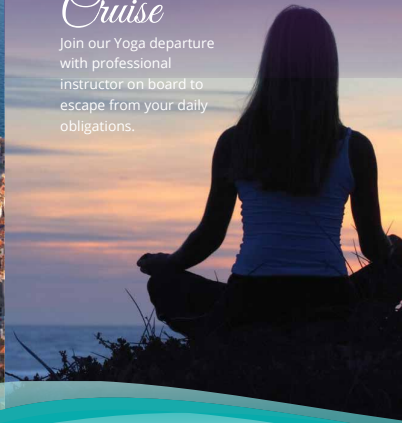
Charming Mediterranean experience from Zagreb to Dubrovnik with unique gastronomic experiences, ideally combined with our cruises from Dubrovnik.



8 nights
Zagreb
Dubrovnik

YOGA & *Cruise*

Join our Yoga departure with professional instructor on board to escape from your daily obligations.



ACTIVE *Cruises*

Cycling & Hiking

Explore magnificent Croatian islands and coastline choosing one of many itineraries for active life lovers.



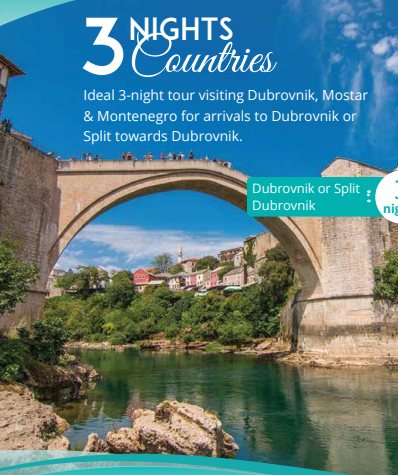
3 NIGHTS *Countries*

Ideal 3-night tour visiting Dubrovnik, Mostar & Montenegro for arrivals to Dubrovnik or Split towards Dubrovnik.

Dubrovnik or Split
Dubrovnik

3 nights

Zagreb, Ljubljana or Venice
Split or Opatija



COAST *Express*

Ideal 3-night tour visiting Plitvice Lakes National Park for arrivals to Zagreb, Ljubljana or Venice and heading to Croatia coastline (Opatija or Split).



YOUNG & *Fun*

Discover why this particular cruise has become «a must» for the young traveler in one of the hottest destinations in Europe.



WINE & *Gourmet*

Taste Croatia on our unique Wine cruise from Dubrovnik to explore the story behind the flawless taste of famous Croatian wine sorts. Our Kvarner Gourmet short cruise from Opatija visits award winning fine food restaurants to enjoy traditional Croatian recipes.



Discover the complete land & cruise offer at katarina-line.com



KATARINA
line

KATARINA LINE D.O.O.
TRAVEL AGENCY
KATARINA-LINE.COM

HEAD OFFICE:

V. SPINČIĆA 13
51410 OPATIJA, CROATIA
TEL. +385 51 603 400
FAX +385 51 271 372

INFO@KATARINA-LINE.HR
CRUISES@KATARINA-LINE.HR

SPLIT OFFICE:

ZRINSKO FRANKOPANSKA 1
21000 SPLIT, CROATIA
TEL. +385 21 321 858
FAX +385 21 360 014

SPLIT@KATARINA-LINE.HR

DUBROVNIK OFFICE:

METOHJSKA 4A
20000 DUBROVNIK, CROATIA
TEL. +385 20 313 777

DUBROVNIK@KATARINA-LINE.HR